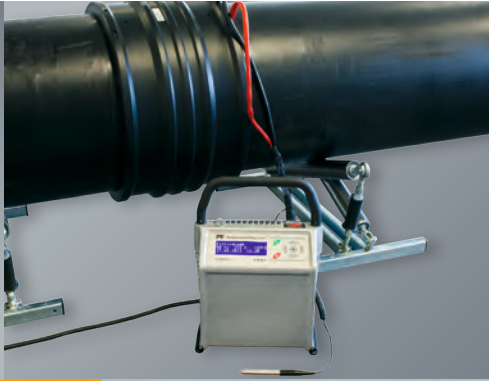
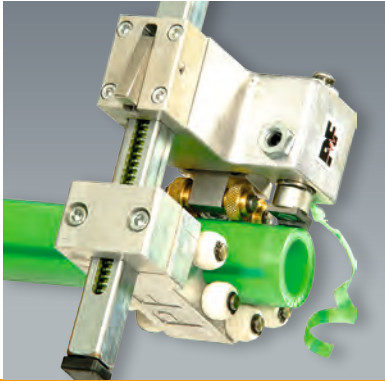




WELDING TECHNOLOGY FOR PE-PIPES



**THE EXPERTS
WITH EXPERIENCE!**

www.pfs-gmbh.com

PFS – The Experts with Experience!



THE EXPERTS FOR THE WELDING OF PLASTIC PIPES ...

Know-how and years of experience ...

Founded in 1997, our young dynamic company quickly became one of the worlds leading manufacturer of plastic welding technology for pipeline construction.

We can rely on our enormous know-how, many years of experience and our innovative employees in the development and successful marketing of our products.

High quality and continuous development of our products ...

The high quality of our products is the main reason to buy for our customers. This is the result of a consistent system integration. That means the inclusion of all system components in the development. Due to the close cooperation with the end users of our systems a continuous experience exchange is made possible.

A number of patents also secures successful development work and demonstrates our great potential in research and development.



PFS – Best Products and Service!

WE OFFER COMPLETE SOLUTIONS FOR PE/PP PIPELINE CONSTRUCTION ...

High-grade products ...

Pipes made of polyethylene (PE) and polypropylene (PP) have already driven out a lot of other common pipe materials and are accepted as a standard product for many fields of application. For a long-lasting gas proof and pressure resistant connection of plastic pipes it is necessary to apply certain welding technologies.

We have specialised in manufacturing electrofusion controllers, machines and tools which make it possible to precisely and reliably apply these technologies to PE and PP pipes. The core competence of our specialists is the development and improvement of our products. Our product range covers a wide range of electrofusion controllers and machines as well as an extensive selection of accessories, tools and analysis software.

Service for our customers ...

Along with a comprehensive product range, we also offer various services. These include the maintenance and repair of controllers, machines and tools as well as the design, development and realization of special products according to customer specifications. Special demands and requirements of customers can be implemented in our own local production facility.

For questions, please call our service team at +49 (0)6631-9652-0 or visit us online at www.pfs-gmbh.com.



ELECTROFUSION CONTROL UNITS



Electrofusion Control Units



Product code 3_3219R106

MAMMUT

Technology	Inverter
Input voltage, -frequency	400 V AC (320-485 V), 50/60 Hz (40-70 Hz)
Output voltage	8-48 V DC or 8-80 V DC
Welding parameter input by:	
Barcode	Yes, reading pen
SmartFuse	No
Manual (U, t)	Yes (8-48 V, 0-9999 s)
Interface, data recording	USB (USB memory stick), Yes (approx. 900 reports)
Display	4x20 characters, large, backlight
Welding cable length	3 m
Welding terminals	6.0 mm (different sizes on request)
Welding cable mounting	Fixed
Additional information	The 8-80 V DC version is available on request
Scope of delivery	Electrofusion control unit, 2 sets of welding cable adapters
Transport weight	50 kg

Electrofusion Control Units



Product code 3F0218V112

POLYCONTROL PLUS (USB) V2.0

Technology	Inverter
Input voltage, -frequency	230 V AC (190-300 V), 50/60 Hz (40-70 Hz)
Output voltage	8-48 V DC
Welding parameter input by:	
Barcode	Yes, reading pen (scanner on request)
SmartFuse	Yes
Manual (U, t)	Yes (8-48 V, 0-9999 s)
Interface, data recording	USB (USB memory stick), Yes (approx. 1000 reports)
Display	4x20 characters, large, backlight
Welding cable length	5 m (different lengths on request)
Welding terminals	4.0 mm (different sizes on request)
Welding cable mounting	Fixed
Additional information	Also available with a wooden transport box
Scope of delivery	Electrofusion control unit, flightcase
Transport weight	26 kg

Electrofusion Control Units



Product code 3F0219V106

POLYCONTROL PLUS (PKS-USB) V2.0

Technology	Inverter
Input voltage, -frequency	230 V AC (190-300 V), 50/60 Hz (40-70 Hz)
Output voltage	8-48 V DC
Welding parameter input by:	
Barcode	Yes, reading pen (scanner on request)
SmartFuse	Yes
Manual (U, t)	Yes (8-48 V, 0-9999 s)
Interface, data recording	USB (USB memory stick), Yes (approx. 1200 reports)
Display	4x20 characters, large, backlight
Welding cable length	5 m (different lengths on request)
Welding terminals	6.0 mm
Welding cable mounting	Fixed
Additional information	Also available with a wooden transport box
Scope of delivery	Electrofusion control unit, flightcase
Transport weight	26 kg

Electrofusion Control Units



Product code 3_0207_103

POLYMATIC PLUS (USB)

Technology	Phase-angle control
Input voltage, -frequency	230 V AC (190-300 V), 50/60 Hz (40-70 Hz) 110 V version on request
Output voltage	8-48 V AC
Welding parameter input by:	
Barcode	Yes, reading pen (scanner on request)
SmartFuse	Yes
Manual (U, t)	Yes (8-48 V, 0-9999 s)
Interface, data recording	USB (USB memory stick), Yes (approx. 1000 reports)
Display	4x20 characters, small, backlight (also available in large)
Welding cable length	5 m (different lengths on request)
Welding terminals	4.0 mm (different sizes on request)
Welding cable mounting	Detachable (fixed cable on request)
Additional information	Also available with a flightcase
Scope of delivery	Electrofusion control unit, plastic transport box
Transport weight	24.5 kg

Electrofusion Control Units



Product code 3_0208T108

TINY DATA MF (USB)

Technology	Phase-angle control
Input voltage, -frequency	230 V AC (190-300 V), 50/60 Hz (40-70 Hz) 110 V version on request
Output voltage	8-48 V AC
Welding parameter input by:	
Barcode	Yes, reading pen (scanner on request)
SmartFuse	Yes
Manual (U, t)	Yes (8-48 V, 0-9999 s)
Interface, data recording	USB (USB memory stick), Yes (approx. 1000 reports)
Display	4x20 characters, small, backlight
Welding cable length	4 m (different lengths on request)
Welding terminals	4.0 mm (different sizes on request)
Welding cable mounting	Fixed
Additional information	Also available with a flightcase
Scope of delivery	Electrofusion control unit, wooden transport box
Transport weight	21.3 kg

Electrofusion Control Units



Product code 3_0008T108

TINY MF

Technology	Phase-angle control
Input voltage, -frequency	230 V AC (190-300 V), 50/60 Hz (40-70 Hz) 110 V version on request
Output voltage	8-48 V AC
Welding parameter input by:	
Barcode	Yes, reading pen (scanner on request)
SmartFuse	Yes
Manual (U, t)	Yes (8-48 V, 0-9999 s)
Interface, data recording	None, No
Display	4x20 characters, small, backlight
Welding cable length	4 m (different lengths on request)
Welding terminals	4.0 mm (different sizes on request)
Welding cable mounting	Fixed
Additional information	Also available with a flightcase
Scope of delivery	Electrofusion control unit, wooden transport box
Transport weight	21.3 kg

Electrofusion Control Units



Product code 3_0205T108

TINY DATA M (USB)

Technology	Phase-angle control
Input voltage, -frequency	230 V AC (190-300 V), 50/60 Hz (40-70 Hz) 110 V version on request
Output voltage	8-48 V AC
Welding parameter input by:	
Barcode	Yes, reading pen (scanner on request)
SmartFuse	No
Manual (U, t)	Yes (8-48 V, 0-9999 s)
Interface, data recording	USB (USB memory stick), Yes (approx. 1000 reports)
Display	4x20 characters, small, backlight
Welding cable length	4 m (different lengths on request)
Welding terminals	4.0 mm (different sizes on request)
Welding cable mounting	Fixed
Additional information	Also available with a flightcase
Scope of delivery	Electrofusion control unit, wooden transport box
Transport weight	21.3 kg

Electrofusion Control Units



Product code 3_0005T108

TINY M

Technology	Phase-angle control
Input voltage, -frequency	230 V AC (190-300 V), 50/60 Hz (40-70 Hz) 110 V version on request
Output voltage	8-48 V AC
Welding parameter input by:	
Barcode	Yes, reading pen (scanner on request)
SmartFuse	No
Manual (U, t)	Yes (8-48 V, 0-9999 s)
Interface, data recording	None, No
Display	4x20 characters, small, backlight
Welding cable length	4 m (different lengths on request)
Welding terminals	4.0 mm (different sizes on request)
Welding cable mounting	Fixed
Additional information	Also available with a flightcase
Scope of delivery	Electrofusion control unit, wooden transport box
Transport weight	15.8 kg

Electrofusion Control Units



Product code 3_0205T118

TINY DATA MF315 (USB)

Technology	Phase-angle control
Input voltage, -frequency	230 V AC (190-300 V), 50/60 Hz (40-70 Hz) 110 V version on request
Output voltage	8-48 V AC
Welding parameter input by:	
Barcode	Yes, reading pen (scanner on request)
SmartFuse	Yes
Manual (U, t)	Yes (8-48 V, 0-9999 s)
Interface, data recording	USB (USB memory stick), Yes (approx. 1000 reports)
Display	4x20 characters, small, backlight
Welding cable length	4 m (different lengths on request)
Welding terminals	4.0 mm (different sizes on request)
Welding cable mounting	Fixed
Additional information	Also available with a flightcase
Scope of delivery	Electrofusion control unit, wooden transport box
Transport weight	21.3 kg

Electrofusion Control Units



Product code 3_0207_000

MONOMATIC DATA (USB)

Technology	Phase-angle control
Input voltage, -frequency	230 V AC (190-300 V), 50/60 Hz (40-70 Hz) 110 V version on request
Output voltage	40 V AC
Welding parameter input by:	
Barcode	No
SmartFuse	Yes
Manual (U, t)	No
Interface, data recording	USB (USB memory stick), Yes (approx. 250 reports)
Display	4x20 characters, small, backlight
Welding cable length	5 m (different lengths on request)
Welding terminals	4.0 mm (different sizes on request)
Welding cable mounting	Detachable (fixed cable on request)
Additional information	Also available with a flightcase
Scope of delivery	Electrofusion control unit, plastic transport box
Transport weight	22 kg

Electrofusion Control Units



Product code 3_0006_000

MONOMATIC

Technology	Phase-angle control
Input voltage, -frequency	230 V AC (190-300 V), 50/60 Hz (40-70 Hz) 110 V version on request
Output voltage	40 V AC
Welding parameter input by:	
Barcode	No
SmartFuse	Yes
Manual (U, t)	No
Interface, data recording	None, No
Display	4x20 characters, small, backlight
Welding cable length	5 m (different lengths on request)
Welding terminals	4.0 mm (different sizes on request)
Welding cable mounting	Fixed (detachable cable on request)
Additional information	Also available with a flightcase
Scope of delivery	Electrofusion control unit, plastic transport box
Transport weight	22 kg

Electrofusion Control Units



Product code 3_0208S324

POLYCODE (USB)

Technology	Phase-angle control
Input voltage, -frequency	230 V AC (190-300 V), 50/60 Hz (40-70 Hz)
Output voltage	8-48 V AC
Welding parameter input by:	
Barcode	Yes scanner
SmartFuse	Yes
Manual (U, t)	No
Interface, data recording	USB (USB memory stick), Yes (approx. 1000 reports)
Display	4x20 characters, small, backlight
Welding cable length	3 m
Welding terminals	Universal (4.0 and 4.7 mm) (different sizes on request)
Welding cable mounting	Fixed
Additional information	
Scope of delivery	Electrofusion control unit, in suitcase
Transport weight	11 kg

Electrofusion Control Units



Product code 3_0008S025

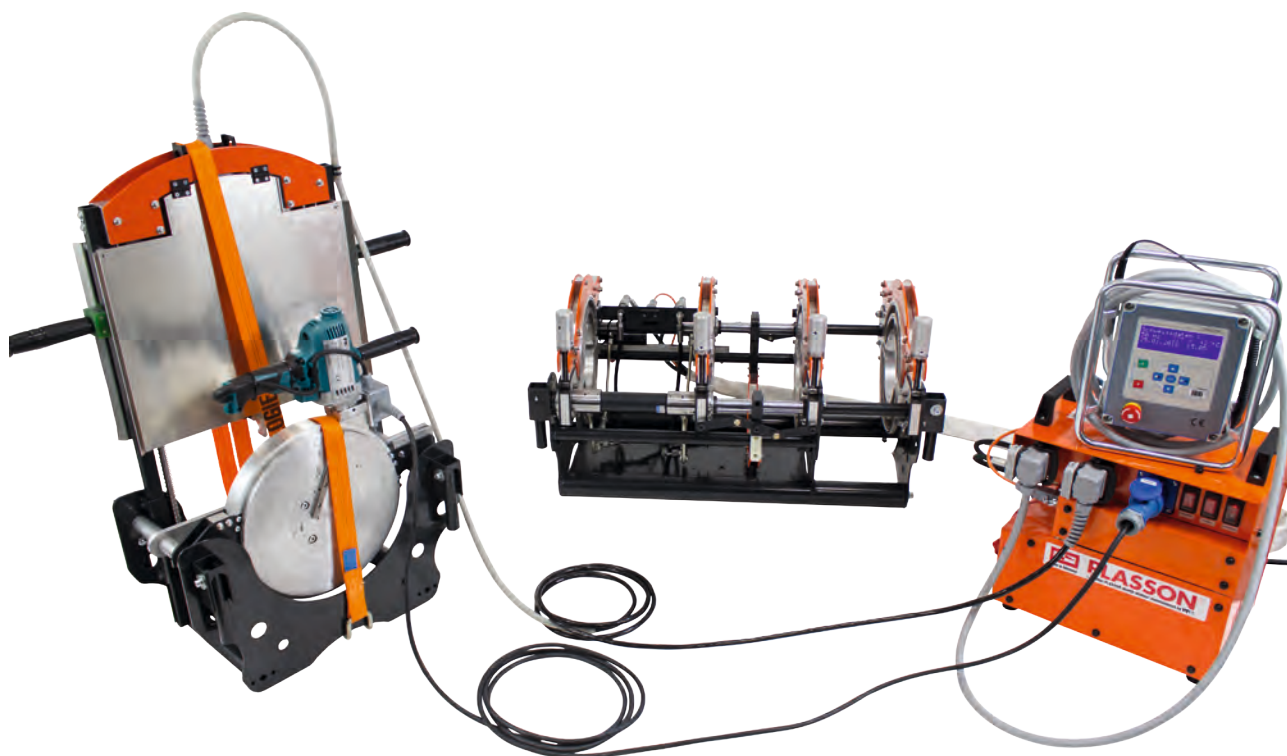
SMARTFUSE 160

Technology	Phase-angle control
Input voltage, -frequency	230 V AC (190-300 V), 50/60 Hz (40-70 Hz)
Output voltage	40 V AC
Welding parameter input by:	
Barcode	No
SmartFuse	Yes
Manual (U, t)	No
Interface, data recording	None, No
Display	4x20 characters, small, backlight
Welding cable length	3 m
Welding terminals	Universal (4.0 and 4.7 mm) (different sizes on request)
Welding cable mounting	Fixed
Additional information	
Scope of delivery	Electrofusion control unit, in suitcase
Transport weight	11 kg

BUTT FUSION MACHINES



Butt Fusion Machines



Product code 6_0003_003

PFS315 ABFM

AUTOMATIC BUTT FUSION MACHINE

Dimension range	315 mm (90-280 mm with reductions) Inch IPS/DIPS reductions available on request
Input voltage/-frequency	230 V AC ($\pm 15\%$), 50/60 Hz ($\pm 15\%$) Available in 110 V and 60 Hz on request
Barcode input	Yes (reading pen)
Interface, data recording	USB (USB memory stick), Yes (approx. 900 reports)
Hydraulic unit	CNC hydraulic unit
Display	4x20 characters, large, backlight
Scope of delivery	Chassis, CNC hydraulic unit w/controller, trimmer, heating element
Additional information	Automatic ejection of heating element reduces the changeover time to a minimum.
Transport weight	220 kg

Butt Fusion Machines



Product code 6_0011_001

PF160CNC

Automatic butt fusion machine

Dimension range	160 mm (40-140 mm with reductions) Inch IPS/DIPS reductions available on request
Input voltage/-frequency	230 V AC ($\pm 15\%$), 50/60 Hz ($\pm 15\%$) Available in 110 V and 60 Hz on request
Barcode input	Yes (reading pen)
Interface, data recording	USB (USB memory stick), Yes (approx. 900 reports)
Hydraulic unit	CNC hydraulic unit
Display	4x20 characters, large, backlight
Scope of delivery	Chassis, CNC hydraulic unit w/controller, trimmer, heating element
Transport weight	116 kg



Product code 6_0011_002

PF160SA

Semi-automatic butt fusion machine

Dimension range	160 mm (40-140 mm with reductions) Inch IPS/DIPS reductions available on request
Input voltage/-frequency	230 V AC ($\pm 15\%$), 50/60 Hz ($\pm 15\%$) Available in 110V and 60 Hz on request
Barcode input	No
Interface, data recording	USB (USB memory stick), Yes (approx. 900 reports)
Hydraulic unit	Semi-automatic hydraulic unit (PF Control Plus)
Display	4x20 characters, small, backlight
Scope of delivery	Chassis, PF Control Plus, hydraulic unit, trimmer, heating element
Transport weight	116 kg



Product code 6_0011_000

PF160M

Manual butt fusion machine

Dimension range	160 mm (40-140 mm with reductions) Inch IPS/DIPS reductions available on request
Input voltage/-frequency	230 V AC ($\pm 15\%$), 50/60 Hz ($\pm 15\%$) Available in 110V and 60 Hz on request
Barcode input	No
Interface, data recording	None, No
Hydraulic unit	Manual hydraulic unit (PF Control)
Display	4x20 characters, small, backlight
Scope of delivery	Chassis, PF Control, hydraulic unit, trimmer, heating element
Transport weight	116 kg

Butt Fusion Machines



Product code 6_0012_001

PF250CNC

Automatic butt fusion machine

Dimension range	250 mm (90-225 mm with reductions) Inch IPS/DIPS reductions available on request
Input voltage/-frequency	230 V AC ($\pm 15\%$), 50/60 Hz ($\pm 15\%$) Available in 110 V and 60 Hz on request
Barcode input	Yes (reading pen)
Interface, data recording	USB (USB memory stick), Yes (approx. 900 reports)
Hydraulic unit	CNC hydraulic unit
Display	4x20 characters, large, backlight
Scope of delivery	Chassis, CNC hydraulic unit w/controller, trimmer, heating element
Transport weight	166 kg



Product code 6_0012_002

PF250SA

Semi-automatic butt fusion machine

Dimension range	250 mm (90-225 mm with reductions) Inch IPS/DIPS reductions available on request
Input voltage/-frequency	230 V AC ($\pm 15\%$), 50/60 Hz ($\pm 15\%$) Available in 110V and 60 Hz on request
Barcode input	No
Interface, data recording	USB (USB memory stick), Yes (approx. 900 reports)
Hydraulic unit	Semi-automatic hydraulic unit (PF Control Plus)
Display	4x20 characters, small, backlight
Scope of delivery	Chassis, PF Control Plus, hydraulic unit, trimmer, heating element
Transport weight	166 kg



Product code 6_0012_000

PF250M

Manual butt fusion machine

Dimension range	250 mm (90-225 mm with reductions) Inch IPS/DIPS reductions available on request
Input voltage/-frequency	230 V AC ($\pm 15\%$), 50/60 Hz ($\pm 15\%$) Available in 110V and 60 Hz on request
Barcode input	No
Interface, data recording	None, No
Hydraulic unit	Manual hydraulic unit (PF Control)
Display	4x20 characters, small, backlight
Scope of delivery	Chassis, PF Control, hydraulic unit, trimmer, heating element
Transport weight	166 kg

Butt Fusion Machines



Product code 6_0013_001

PF315CNC

Automatic butt fusion machine

Dimension range	315 mm (90-280 mm with reductions) Inch IPS/DIPS reductions available on request
Input voltage/-frequency	230 V AC ($\pm 15\%$), 50/60 Hz ($\pm 15\%$) Available in 110 V and 60 Hz on request
Barcode input	Yes (reading pen)
Interface, data recording	USB (USB memory stick), Yes (approx. 900 reports)
Hydraulic unit	CNC hydraulic unit
Display	4x20 characters, large, backlight
Scope of delivery	Chassis, CNC hydraulic unit w/controller, trimmer, heating element
Transport weight	220 kg



Product code 6_0013_002

PF315SA

Semi-automatic butt fusion machine

Dimension range	315 mm (90-280 mm with reductions) Inch IPS/DIPS reductions available on request
Input voltage/-frequency	230 V AC ($\pm 15\%$), 50/60 Hz ($\pm 15\%$) Available in 110V and 60 Hz on request
Barcode input	No
Interface, data recording	USB (USB memory stick), Yes (approx. 900 reports)
Hydraulic unit	Semi-automatic hydraulic unit (PF Control Plus)
Display	4x20 characters, small, backlight
Scope of delivery	Chassis, PF Control Plus, hydraulic unit, trimmer, heating element
Transport weight	220 kg



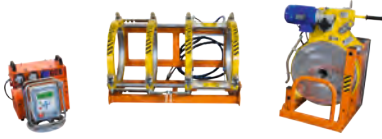
Product code 6_0013_000

PF315M

Manual butt fusion machine

Dimension range	315 mm (90-280 mm with reductions) Inch IPS/DIPS reductions available on request
Input voltage/-frequency	230 V AC ($\pm 15\%$), 50/60 Hz ($\pm 15\%$) Available in 110V and 60 Hz on request
Barcode input	No
Interface, data recording	None, No
Hydraulic unit	Manual hydraulic unit (PF Control)
Display	4x20 characters, small, backlight
Scope of delivery	Chassis, PF Control, hydraulic unit, trimmer, heating element
Transport weight	220 kg

Butt Fusion Machines

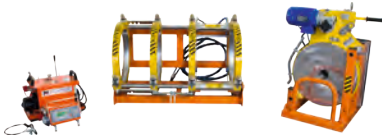


Product code 6_0014_001

PF500CNC

Automatic butt fusion machine

Dimension range	500 mm (250-450 mm with reductions) Inch IPS/DIPS reductions available on request
Input voltage/-frequency	400 V AC ($\pm 15\%$), 50/60 Hz ($\pm 15\%$)
Barcode input	Yes (reading pen)
Interface, data recording	USB (USB memory stick), Yes (approx. 900 reports)
Hydraulic unit	CNC hydraulic unit
Display	4x20 characters, large, backlight
Scope of delivery	Chassis, CNC hydraulic unit w/controller, trimmer, heating element
Transport weight	480 kg

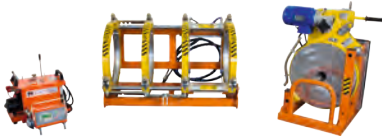


Product code 6_0014_002

PF500SA

Semi-automatic butt fusion machine

Dimension range	500 mm (250-450 mm with reductions) Inch IPS/DIPS reductions available on request
Input voltage/-frequency	400 V AC ($\pm 15\%$), 50/60 Hz ($\pm 15\%$)
Barcode input	No
Interface, data recording	USB (USB memory stick), Yes (approx. 900 reports)
Hydraulic unit	Semi-automatic hydraulic unit (PF Control Plus)
Display	4x20 characters, small, backlight
Scope of delivery	Chassis, PF Control Plus, hydraulic unit, trimmer, heating element
Transport weight	480 kg



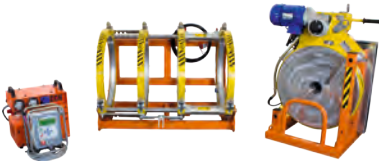
Product code 6_0014_000

PF500M

Manual butt fusion machine

Dimension range	500 mm (250-450 mm with reductions) Inch IPS/DIPS reductions available on request
Input voltage/-frequency	400 V AC ($\pm 15\%$), 50/60 Hz ($\pm 15\%$)
Barcode input	No
Interface, data recording	None, No
Hydraulic unit	Manual hydraulic unit (PF Control)
Display	4x20 characters, small, backlight
Scope of delivery	Chassis, PF Control, hydraulic unit, trimmer, heating element
Transport weight	480 kg

Butt Fusion Machines



Product code 6_0015_001

PF630CNC

Automatic butt fusion machine

Dimension range	630 mm (315-560 mm with reductions) Inch IPS/DIPS reductions available on request
Input voltage/-frequency	400 V AC ($\pm 15\%$), 50/60 Hz ($\pm 15\%$)
Barcode input	Yes (reading pen)
Interface, data recording	USB (USB memory stick), Yes (approx. 900 reports)
Hydraulic unit	CNC hydraulic unit
Display	4x20 characters, large, backlight
Scope of delivery	Chassis, CNC hydraulic unit w/controller, trimmer, heating element
Transport weight	660 kg

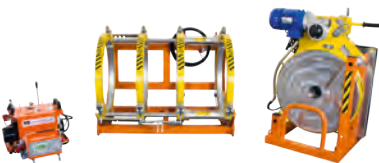


Product code 6_0015_002

PF630SA

Semi-automatic butt fusion machine

Dimension range	630 mm (315-560 mm with reductions) Inch IPS/DIPS reductions available on request
Input voltage/-frequency	400 V AC ($\pm 15\%$), 50/60 Hz ($\pm 15\%$)
Barcode input	No
Interface, data recording	USB (USB memory stick), Yes (approx. 900 reports)
Hydraulic unit	Semi-automatic hydraulic unit (PF Control Plus)
Display	4x20 characters, small, backlight
Scope of delivery	Chassis, PF Control Plus, hydraulic unit, trimmer, heating element
Transport weight	660 kg



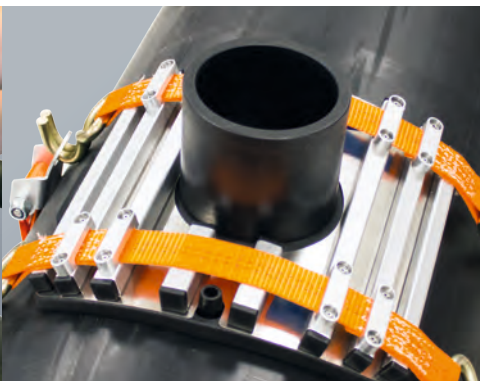
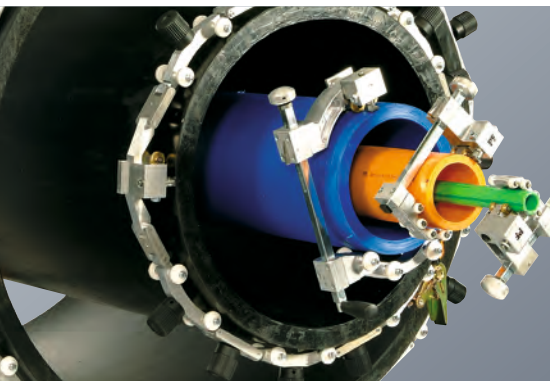
Product code 6_0015_000

PF630M

Manual butt fusion machine

Dimension range	630 mm (315-560 mm with reductions) Inch IPS/DIPS reductions available on request
Input voltage/-frequency	400 V AC ($\pm 15\%$), 50/60 Hz ($\pm 15\%$)
Barcode input	No
Interface, data recording	None, No
Hydraulic unit	Manual hydraulic unit (PF Control)
Display	4x20 characters, small, backlight
Scope of delivery	Chassis, PF Control, hydraulic unit, trimmer, heating element
Transport weight	660 kg

TOOLS



Cutting Tools



Product code 5_3000_005

PIPE SHEARS 42 MM

Dimension range	Up to 42 mm
Cutting depth	Pipe is cut completely
Suitable for	PE, PE-HD, PE-X, PP
Additional information	Single handed use, catch mechanism
Scope of delivery	Pipe shears, packaging
Transport weight	0.4 kg



Product code 5_3000_007

PIPE SHEARS 63 MM SMALL

Dimension range	Up to 63 mm (single handed use)
Cutting depth	Pipe is cut completely
Suitable for	PE, PE-HD, PE-X, PP
Additional information	Single handed use, catch mechanism
Scope of delivery	Pipe shears, packaging
Transport weight	0.75 kg



Product code 5_3000_001

PIPE SHEARS 63 MM LARGE

Dimension range	Up to 63 mm
Cutting depth	Pipe is cut completely
Suitable for	PE, PE-HD, PE-X, PP
Additional information	Long handle, catch mechanism
Scope of delivery	Pipe shears, packaging
Transport weight	1.2 kg

Cutting Tools



Product code 5_3001_004

ROTATIONAL PIPE CUTTER (S-TYPE) 20-75 MM

Dimension range	20-75 mm
Cutting depth	14 mm
Suitable for	PE, PE-HD, PE-X, PP
Additional information	Quick adjustment
Scope of delivery	Pipe cutter, packaging
Transport weight	0.8 kg



Product code 5_3001_001

ROTATIONAL PIPE CUTTER (S-TYPE) 50-140 MM

Dimension range	50-140 mm
Cutting depth	16 mm
Suitable for	PE, PE-HD, PE-X, PP
Additional information	Quick adjustment
Scope of delivery	Pipe cutter, packaging
Transport weight	1.5 kg



Product code 5_3001_002

ROTATIONAL PIPE CUTTER (S-TYPE) 90-160 MM

Dimension range	90-160 mm
Cutting depth	16 mm
Suitable for	PE, PE-HD, PE-X, PP
Additional information	Quick adjustment
Scope of delivery	Pipe cutter, packaging
Transport weight	1.7 kg

Cutting Tools



Product code 4_4400_002

ROTATIONAL PIPE CUTTER (PF-TYPE) 32-125 MM

Dimension range 32-125 mm
Cutting depth 32 mm
Suitable for PE, PE-HD, PE-X, PP

Additional information Quick adjustment, reversible blade, clean cut

Scope of delivery Pipe cutter, transport suitcase
Transport weight 2.3 kg



Product code 4_4400_001

ROTATIONAL PIPE CUTTER (PF-TYPE) 63-200 MM

Dimension range 63-200 mm
Cutting depth 32 mm
Suitable for PE, PE-HD, PE-X, PP

Additional information Quick adjustment, reversible blade, clean cut

Scope of delivery Pipe cutter, transport suitcase
Transport weight 3.8 kg



Product code 4_4400_003

ROTATIONAL PIPE CUTTER (PF-TYPE) 90-315 MM

Dimension range 90-315 mm
Cutting depth 32 mm
Suitable for PE, PE-HD, PE-X, PP

Additional information Quick adjustment, reversible blade, clean cut

Scope of delivery Pipe cutter, transport suitcase
Transport weight 5 kg

Cutting Tools



Product code 4_4401_005

ROTARY CIRCULAR SAW 180-400 MM

Dimension range 180-400 mm
Cutting depth 39 mm
Suitable for PE, PE-HD, PE-X, PP

Additional information Quick setup, multidimensional, safety pedal-switch

Scope of delivery Saw, safety pedal switch, aluminium box
Transport weight 22 kg



Product code 4_4401_002

ROTARY CIRCULAR SAW 250-500 MM

Dimension range 250-500 mm
Cutting depth 65 mm
Suitable for PE, PE-HD, PE-X, PP

Additional information Quick setup, multidimensional, safety pedal-switch

Scope of delivery Saw, safety pedal switch, magn. pipe ruler, flightcase
Transport weight 31.5 kg



Product code 4_4401_001

ROTARY CIRCULAR SAW 500-1200 MM

Dimension range 500-1200 mm
Cutting depth 85 mm
Suitable for PE, PE-HD, PE-X, PP

Additional information Quick setup, multidimensional, safety pedal-switch
Optional extension to 1600 mm available

Scope of delivery Saw, safety pedal switch, magn. pipe ruler, flightcase
Transport weight 41.5 kg

Pipe Clamps and Supports



Product code 4_4300_000

PIPE CLAMP 15-63 MM

Dimension range 15-63 mm

Additional information Quick adjustment, multidimensional
Angle adjustment 0-90° (7.5° per notch)

Scope of delivery Pipe clamp, hex key, transport suitcase

Transport weight 4.2 kg



Product code 4_4300_001

PIPE CLAMP 32-110 MM

Dimension range 32-110 mm

Additional information Quick adjustment, multidimensional
Angle adjustment 0-90° (7.5° per notch)

Scope of delivery Pipe clamp, hex key, transport suitcase

Transport weight 6.1 kg



Product code 4_4300_007

PIPE CLAMP 63-180 MM

Dimension range 63-180 mm

Additional information Quick adjustment, multidimensional
Angle adjustment 0-90° (7.5° per notch)

Scope of delivery Pipe clamp, hex key, transport box

Transport weight 19.2 kg

Pipe Clamps and Supports



Product code 4_4300_002

PIPE CLAMP 110-225 MM

Dimension range 110-225 mm

Additional information Quick adjustment, multidimensional
Angle adjustment 0-90° (7.5° per notch)

Scope of delivery Pipe clamp, hex key, transport box

Transport weight 18.2 kg



Product code 4_4300_025

STRAP CLAMP 63-250 MM

Dimension range 63-250 mm

Additional information Multidimensional
Approx. 7.5° per notch Marking at 0°, 11°, 22,5°, 30°, 45°, 60°, 75°, 90°

Scope of delivery Strap clamp, hex key, transport box

Transport weight 18.9 kg



Product code 4_4300_023

STRAP CLAMP 110-560 MM

Dimension range 110-560 mm

Additional information Multidimensional
Angle adapter for 22.5°, 45°, 90°, 180°

Scope of delivery Strap clamp, angle adapter, transport box

Transport weight 31 kg

Pipe Clamps and Supports



Product code 4_4300_021
PIPE CLAMP 250-630 MM (800 MM)
(2 fixed clamps)

Dimension range	250-630 mm (800 mm)
Additional information	Multidimensional One unit for pipes up to 630 mm
Scope of delivery	Pipe clamp
Transport weight	19 kg



Product code 4_4300_022
PIPE CLAMP 250-630 MM (800 MM)
(1 pulling clamp, 1 fixed clamp)

Dimension range	250-630 mm (800 mm)
Additional information	Multidimensional One unit for pipes up to 630 mm
Scope of delivery	Pipe clamp
Transport weight	22,5 kg



Product code 4_4300_026
PIPE CLAMP 250-800 MM
(Set of 2 units incl. pulling clamps and pulling shoes for couplers)

Dimension range	250-800 mm
Additional information	Multidimensional Two units especially for larger pipes (>630 mm)
Scope of delivery	Two pipe clamps
Transport weight	47 kg

Pipe Clamps and Supports



Product code 4_4300_005

STAR CLAMP 20-63 MM (4-POINT CLAMP)

Dimension range	20-63 mm (4-point clamp)
Additional information	Quick adjustment, multidimensional Also available as 2-point clamp and in 20-40 mm
Scope of delivery	Star clamp, hex key, transport box
Transport weight	6 kg



Product code 4_4300_030

GEO-CLAMP 25-40 MM

Dimension range	25-40 mm
Additional information	Quick adjustment, multidimensional Made for geothermal applications
Scope of delivery	Geo clamp, transport suitcase
Transport weight	5.8 kg



Product code 5_3004_001

PIPE HANDLE UP TO 200 MM

Dimension range	Up to 200 mm
Additional information	Quick adjustment, multidimensional
Scope of delivery	Pipe handle, packaging
Transport weight	1 kg

Pipe Clamps and Supports



Product code 4_4601_001

PIPE ROLLER 16-315 MM

Dimension range 16-315 mm

Additional information Multidimensional

Scope of delivery Pipe roller

Transport weight 2 kg



Product code 4_4601_002

PIPE ROLLER 16-1000 MM

Dimension range 16-1000 mm

Additional information Quick adjustment, multidimensional

Scope of delivery Pipe roller

Transport weight 10.2 kg



Product code 4_4601_003

PIPE SUPPORT 63-225 MM

Dimension range 63-225 mm

Additional information Multidimensional

Scope of delivery Pipe support, packaging

Transport weight 11.3 kg

Pipe Clamps and Supports



Product code 4_4601_007

PIPE SUPPORT 200-1400 MM

Dimension range 200-1400 mm

Additional information Multidimensional

Scope of delivery Pipe support

Transport weight 28.3 kg

Squeeze-off Tools



Product code 4_4100_010

MANUAL SQUEEZE-OFF TOOL 20-63 MM

Dimension range	16-63 mm (SDR11/17) SDR11: 16/20-63 mm, SDR17: 63 mm
Additional information	Equipped with glide handle
Scope of delivery	Squeeze-off tool
Transport weight	2.8 kg



Product code 4_4100_001/1

MANUAL SQUEEZE-OFF TOOL SET 20-63 MM

Dimension range	16-63 mm (SDR11/17) SDR11: 16/20-63 mm, SDR17: 63 mm
Additional information	Comes with re-rounding elements 63/50 mm and 40/32 mm.
Scope of delivery	Squeeze-off tool, re-rounders, suitcase
Transport weight	8.1 kg



Product code 4_4100_006

MANUAL SQUEEZE-OFF TOOL 63-90 MM

Dimension range	63-90 mm (SDR11/SDR17)
Additional information	Equipped with glide handle
Scope of delivery	Squeeze-off tool
Transport weight	8.2 kg

Squeeze-off Tools



Product code 4_4100_004

HYDRAULIC SQUEEZE-OFF TOOL 63-180 MM

Dimension range 63-180 mm (SDR11)

Additional information Also available with SDR17 stopper

Scope of delivery Squeeze-off tool, transport box

Transport weight 58 kg



Product code 4_4100_003

HYDRAULIC SQUEEZE-OFF TOOL 75-200 MM

Dimension range 75-200 mm (SDR11)

Additional information Also available with SDR17 stopper

Scope of delivery Squeeze-off tool, transport box

Transport weight 58 kg

Rounding Tools



Product code 5_3006_110

ROUNDING-RING 110 MM

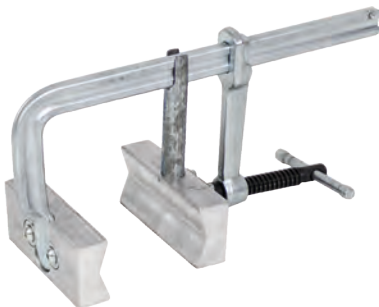
Dimension range	110 mm
Suitable for	PE, PE-HD, PE-X, PP
Additional information	Nut size M12 (SW19) Available sizes: 63-250 mm
Scope of delivery	Rounding ring
Transport weight	3 kg



Product code 5_3005_110

RE-ROUNDING-SHELL 110 MM

Dimension range	110 mm
Suitable for	PE, PE-HD, PE-X, PP
Additional information	Nut size M12 (SW19) Available sizes: 63-225 mm
Scope of delivery	Re-rounding shell
Transport weight	6.8 kg



Product code 4_4602_005

ROUNDING CLAMP 63-180 MM

Dimension range	63-180 mm
Suitable for	PE, PE-HD, PE-X, PP
Additional information	Multidimensional Max. deforming force 8500 kN
Scope of delivery	Rounding clamp
Transport weight	4 kg

Rounding Tools



Product code 4_4602_003
ROUNDING CLAMP 110-250 MM

Dimension range	110-250 mm
Suitable for	PE, PE-HD, PE-X, PP
Additional information	Multidimensional Max. deforming force 12000 kN
Scope of delivery	Rounding clamp
Transport weight	4.4 kg



Product code 4_4602_004
ROUNDING CLAMP 180-315 MM

Dimension range	180-315 mm
Suitable for	PE, PE-HD, PE-X, PP
Additional information	Multidimensional Max. deforming force 22000 kN
Scope of delivery	Rounding clamp
Transport weight	9.4 kg



Product code 4_4602_009
ROUNDING CLAMP 250-400 MM

Dimension range	250-400 mm
Suitable for	PE, PE-HD, PE-X, PP
Additional information	Multidimensional Max. deforming force 35000 kN
Scope of delivery	Rounding clamp
Transport weight	17.4 kg

Rounding Tools



Product code 5_3008_005

HYDRAULIC ROUNDING RING 500 MM

Dimension range	500 mm
Suitable for	PE, PE-HD, PE-X, PP
Additional information	Hydraulic pump must be ordered separately Available sizes: 315-1200 mm
Scope of delivery	Hydr. rounding tool, hoisting chains
Transport weight	84.5 kg



Product code 4_4602_013

MECHANICAL ROUNDING TOOL 450-560 MM

Dimension range	450-560 mm
Suitable for	PE, PE-HD, PE-X, PP
Additional information	Multidimensional
Scope of delivery	Mech. rounding tool, wrenches, carrying bag
Transport weight	20.3 kg



Product code 4_4602_014

MECHANICAL ROUNDING TOOL 560-710 MM

Dimension range	560-710 mm
Suitable for	PE, PE-HD, PE-X, PP
Additional information	Multidimensional
Scope of delivery	Mech. rounding tool, wrenches, carrying bag
Transport weight	24.2 kg

Rounding Tools



Product code 4_4602_012

HYDRAULIC ROUNDING TOOL 450-800 MM

Dimension range	450-800 mm
Suitable for	PE, PE-HD, PE-X, PP
Additional information	Multidimensional, hydraulic pump Max. deforming force 100000 kN
Scope of delivery	Hydr. rounding tool, transport box
Transport weight	42.6 kg

Scraping Tools



Product code 5_3002_001

HAND SCRAPER SMALL

Dimension range	None specified
Scraping depth	Reversible blade with 4 scraping blades
Blade width	Depending on user
Suitable for	38 mm / 1.5 Inch
Additional information	PE, PE-HD, PE-X, PP
Scope of delivery	Available sizes: 38, 63 mm
Transport weight	Plastic handle
	Hand scraper
	0.1 kg



Product code 5_3002_003

HAND SCRAPER LARGE

Dimension range	None specified
Scraping depth	Reversible blade with 4 scraping blades
Blade width	Depending on user
Suitable for	63 mm / 2.5 Inch
Additional information	PE, PE-HD, PE-X, PP
Scope of delivery	Available sizes: 38, 63 mm
Transport weight	Plastic handle
	Hand scraper
	0.15 kg



Product code 5_3002_005

HAND SCRAPER LARGE

Dimension range	None specified
Scraping depth	Depending on user
Blade width	63 mm / 2.5 Inch
Suitable for	PE, PE-HD, PE-X, PP
Additional information	Available size: 63 mm
Scope of delivery	Wooden handle
Transport weight	Hand scraper
	0.12 kg

Scraping Tools



Product code 4_4200_000

ROTATIONAL SCRAPER TOOL 16-32 MM

Dimension range	16-32 mm (16-40 mm on request)
Scraping depth	0.2 mm (0.1-0.3 mm)
Blade width	8 mm
Suitable for	PE, PE-HD, PE-X, PP
Additional information	Quick setup, multidimensional
Scope of delivery	Rotational scraper, spare blade, transport suitcase
Transport weight	0.9 kg



Product code 4_4200_020

SCRAPER HEAD 32 MM

Dimension range	32 mm
Scraping depth	0.2 mm (0.1-0.3 mm)
Blade width	8 mm
Suitable for	PE, PE-HD, PE-X, PP
Additional information	Hex shank for driller, for straight pipes/spigots Available sizes: 16, 20, 25, 40, 50, 63 mm
Scope of delivery	Scraper head, plastic container
Transport weight	0.5 kg



Product code 4_4200_001

ROTATIONAL SCRAPER TOOL 20-63 MM

Dimension range	20-63 mm
Scraping depth	0.2 mm (0.1-0.3 mm)
Blade width	8 mm
Suitable for	PE, PE-HD, PE-X, PP
Additional information	Quick adjustment, ovality compensation
Scope of delivery	Rotational scraper, spare blade, transport suitcase
Transport weight	1.2 kg

Scraping Tools



Product code 4_4200_031

ROTATIONAL SCRAPER TOOL 20-125 MM

Dimension range	20-125 mm
Scraping depth	0.2 mm (0.1-0.3 mm)
Blade width	8 mm
Suitable for	PE, PE-HD, PE-X, PP
Additional information	Quick adjustment, ovality compensation
Scope of delivery	Rotational scraper, spare blade, transport suitcase
Transport weight	1.4 kg



Product code 4_4200_032

ROTATIONAL SCRAPER TOOL 63-200 MM

Dimension range	63-200 mm
Scraping depth	0.2 mm (0.1-0.3 mm)
Blade width	8 mm
Suitable for	PE, PE-HD, PE-X, PP
Additional information	Quick adjustment, ovality compensation
Scope of delivery	Rotational scraper, spare blade, transport suitcase
Transport weight	3.8 kg



Product code 4_4200_014

ROTATIONAL SCRAPER TOOL 90-315 MM

Dimension range	90-315 mm
Scraping depth	0.3 mm (0.25-0.35 mm)
Blade width	
Suitable for	PE, PE-HD, PE-X, PP
Additional information	Quick adjustment, ovality compensation
Scope of delivery	Rotational scraper, spare blade, transport suitcase
Transport weight	4.7 kg

Scraping Tools



Product code 4_4200_015
PIPE END SCRAPER 63-200 MM

Dimension range	63 mm (SDR11) to 200 mm (SDR17,6)
Scraping depth	0.2 mm (0.1-0.3 mm)
Blade width	8 mm
Suitable for	PE, PE-HD, PE-X, PP
Additional information	Quick adjustment, ovality compensation
Scope of delivery	Pipe end scraper, spare blade, transport suitcase
Transport weight	4.1 kg



Product code 4_4200_027
PIPE END SCRAPER 90-315 MM

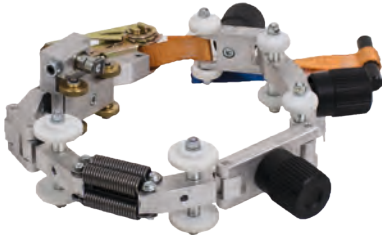
Dimension range	90 mm (SDR11) to 315 mm (SDR17,6)
Scraping depth	0.3 mm (0.25-0.35 mm)
Blade width	8 mm
Suitable for	PE, PE-HD, PE-X, PP
Additional information	Quick adjustment, ovality compensation
Scope of delivery	Pipe end scraper, spare blade, transport suitcase
Transport weight	6.6 kg



Product code 4_4200_016
PIPE END SCRAPER 180-400 MM

Dimension range	180 mm (SDR11) to 400 mm (SDR17,6)
Scraping depth	0.3 mm (0.25-0.35 mm)
Blade width	8 mm
Suitable for	PE, PE-HD, PE-X, PP
Additional information	Quick adjustment, ovality compensation
Scope of delivery	Pipe end scraper, spare blade, transport suitcase
Transport weight	9.4 kg

Scraping Tools



Product code 4_4200_013
SCRAPER CHAIN 110-400 MM

Dimension range	110-400 mm
Scraping depth	0.3 mm (0.25-0.35 mm)
Blade width	13 mm
Suitable for	PE, PE-HD, PE-X, PP
Additional information	Quick setup, multidimensional
Scope of delivery	Scraper chain, spare blade, transport suitcase
Transport weight	4.8 kg



Product code 4_4200_007
SCRAPER CHAIN 250-450 MM

Dimension range	250-450 mm (optionally extensible to 800 mm)
Scraping depth	0.3 mm (0.25-0.35 mm)
Blade width	13 mm
Suitable for	PE, PE-HD, PE-X, PP
Additional information	Quick setup, multidimensional
Scope of delivery	Scraper chain, spare blade, transport suitcase
Transport weight	8.3 kg



Product code 4_4200_009
SCRAPER CHAIN 250-800 MM

Dimension range	250-800 mm (optionally extensible to 1000 mm)
Scraping depth	0.3 mm (0.25-0.35 mm)
Blade width	13 mm
Suitable for	PE, PE-HD, PE-X, PP
Additional information	Quick setup, multidimensional
Scope of delivery	Scraper chain, spare blade, transport suitcase
Transport weight	9.6 kg

Scraping Tools



Product code 4_4200_029
SCRAPER CHAIN 250-1000 MM

Dimension range	250-1000 mm
Scraping depth	0.3 mm (0.25-0.35 mm)
Blade width	13 mm
Suitable for	PE, PE-HD, PE-X, PP
Additional information	Quick setup, multidimensional
Scope of delivery	Scraper chain, spare blade, transport suitcase
Transport weight	11 kg



Product code 4_4200_012
SCRAPER CHAIN 800-1200 MM

Dimension range	800-1200 mm (optionally extensible to 1400 and 1600 mm)
Scraping depth	0.3 mm (0.25-0.35 mm)
Blade width	13 mm
Suitable for	PE, PE-HD, PE-X, PP
Additional information	Quick setup, multidimensional
Scope of delivery	Scraper chain, spare blade, transport suitcase
Transport weight	13.5 kg



Product code 4_4200_012/4
SCRAPER CHAIN 800-1600 MM

Dimension range	800-1600 mm
Scraping depth	0.3 mm (0.25-0.35 mm)
Blade width	13 mm
Suitable for	PE, PE-HD, PE-X, PP
Additional information	Quick setup, multidimensional
Scope of delivery	Scraper chain, spare blade, transport suitcase
Transport weight	16 kg

Scraping Tools



Product code 4_4200_030

ELECTRICAL SCRAPER CHAIN 355-1200 MM

Dimension range	355-1200 mm (optionally extensible to 1600 mm)
Scraping depth	0.2 mm (0.1-0.3 mm)
Blade width	40 mm
Suitable for	PE, PE-HD, PE-X, PP
Additional information	230 V / 50/60 Hz
Scope of delivery	Electrical scraper chain, safety pedal switch, transport box
Transport weight	34 kg



Product code 4_4200_024

ELECTRICAL SADDLE SCRAPER 230 V / 50/60 HZ

Dimension range	From 110 mm on
Scraping depth	0.2 mm (0.1-0.3 mm)
Blade width	40 mm
Suitable for	PE, PE-HD, PE-X, PP
Additional information	230 V / 50/60 Hz With collection bag
Scope of delivery	Electrical saddle scraper, transport suitcase
Transport weight	9.5 kg



Product code 4_4200_025

ELECTRICAL SADDLE SCRAPER 110 V / 60 HZ

Dimension range	From 110 mm on
Scraping depth	0.2 mm (0.1-0.3 mm)
Blade width	40 mm
Suitable for	PE, PE-HD, PE-X, PP
Additional information	110 V / 60 Hz With collection bag
Scope of delivery	Electrical saddle scraper, transport suitcase
Transport weight	9 kg

Scraping Tools



Product code 4_4200_026

ELECTRICAL SADDLE SCRAPER BATTERY POWERED

Dimension range	From 110 mm on
Scraping depth	0.2 mm (0.1-0.3 mm)
Blade width	40 mm
Suitable for	PE, PE-HD, PE-X, PP
Additional information	Battery powered With collection bag
Scope of delivery	Electrical saddle scraper, battery charger, 2 batteries, transport suitcase
Transport weight	10.2 kg



Product code 4_4200_028

PNEUMATIC SADDLE SCRAPER

Dimension range	From 110 mm on
Scraping depth	0.2 mm (0.1-0.3 mm)
Blade width	40 mm
Suitable for	PE, PE-HD, PE-X, PP
Additional information	Powered by compressed air
Scope of delivery	Pneumatic saddle scraper, transport suitcase
Transport weight	8.6 kg



Product code 4_4600_001

EXTERNAL BEAD REMOVER 90-315 MM

Dimension range	90-315 mm (optionally extensible to 630 mm)
Scraping depth	Removes bead
Blade width	40 mm
Suitable for	PE, PE-HD, PE-X, PP
Additional information	Quick setup, multidimensional
Scope of delivery	External bead remover, transport suitcase
Transport weight	8 kg

Tools for Saddles



Product code 4_4700_001

DRILLING AND CLAMPING TOOL 160 MM

Complete Set for spigots 160 mm

For saddle size groups	L (Wastewater saddle only)
Dimension range	160 mm
Additional information	Tool for adjustable couplers
Scope of delivery	Designed for PLASSON LightFit couplers Drilling and clamping tool, drill, file, wrenches, transport suitcase
Transport weight	14.1 kg



Product code 4_4701_003

SPLITABLE SADDLE CLAMP SET 90-160 MM

Complete Set for spigots 90-160 mm

For saddle size groups	L
Dimension range	250-800 mm saddle, 90, 110, 125, 160 mm spigot
Additional information	Complete set of clamping plates for saddles with 90, 110, 125, 160 mm spigots A pressure test pipe removal tool for PLASSON saddles is also included
Scope of delivery	4 splitable saddle clamps, 2 ratchets w/straps incl. TFI, rounding ring, press. test pipe removal tool, transport suitcase
Transport weight	25.5 kg



Product code 4_4701_004

SPLITABLE SADDLE CLAMP SET 3" IPS-4" DIPS

Complete Set for spigots 3" IPS-4" DIPS

For saddle size groups	L
Dimension range	10"-32" saddle, 3" IPS-4" DIPS spigot
Additional information	Complete set of clamping plates for saddles with 3" IPS-4" DIPS spigots A pressure test pipe removal tool for PLASSON saddles is also included
Scope of delivery	3 splitable saddle clamps, 2 ratchets w/straps incl. TFI, rounding ring, press. test pipe removal tool, transport suitcase
Transport weight	21 kg

Tools for Saddles



Product code 4_4701_111

SPLITABLE SADDLE CLAMP SET 110 MM

Set for 110 mm spigot

For saddle size groups

L

Dimension range

250-800 mm saddle, 110 mm spigot

Additional information

Also available for saddles with 90, 125 and 160 mm spigots

A pressure test pipe removal tool for PLASSON saddles is also included

Scope of delivery

Splitable saddle clamp, 2 ratchets w/straps, rounding ring, press. test pipe removal tool, transport suitcase

Transport weight

15.3 kg



Product code 4_4701_101

SPLITABLE SADDLE CLAMP SET 4" IPS

Set for 4" IPS spigot

For saddle size groups

L

Dimension range

250-800 mm saddle, 4" IPS spigot

Additional information

Also available for saddles with 2" female thread, 3" IPS and 4" DIPS spigots

A pressure test pipe removal tool for PLASSON saddles is also included

Scope of delivery

Splitable saddle clamp, 2 ratchets w/straps, rounding ring, press. test pipe removal tool, transport suitcase

Transport weight

15.3 kg



Product code 4_4702_999

DRILL FOR CORE CUTTERS

For core cutters for 2"-250 mm spigots

For saddle size groups

L, XL

Dimension range

For core cutters 2"-250 mm

Additional information

Can also be used with core cutters for saddles of group XL (180-250 mm)

Scope of delivery

The drill is specially modified to be used together with core cutters by PFS

Set includes a long handle and a high-torque attachment and special hexagonal adapter shank for PFS core cutters

Transport weight

8.1 kg

Tools for Saddles



Product code 4_4702_000

CORE CUTTER SET METRIC

Complete set with 90-160 mm core cutters

For saddle size groups	L
Dimension range	90-160 mm
Additional information	Complete set of core cutters for 90, 110, 125, 160 mm spigots Optimum results when used with a high-torque, low rpm drill
Scope of delivery	90-160 mm core cutters incl. SDS-max shank, pilot drill, SDS-plus and 13 mm shank, transport suitcase
Transport weight	11.3 kg



Product code 4_4702_002

CORE CUTTER SET INCH

Complete set with 2" female thread-4" DIPS core cutters

For saddle size groups	L
Dimension range	2" female thread-4" DIPS
Additional information	Complete set of core cutters for 2" female thread, 3" IPS, 4" IPS and 4" DIPS spigots Optimum results when used with a high-torque, low rpm drill
Scope of delivery	2" female thread-4" DIPS core cutters incl. SDS-max shank, pilot drill, SDS-plus and 13 mm shank, transport suitcase
Transport weight	9.5 kg



Product code 4_4702_007

CORE CUTTER FOR SADDLES 110 MM

For 110 mm spigot

For saddle size groups	L
Dimension range	110 mm
Additional information	Also available for 90, 125 and 160 mm spigots With SDS-max shank (SDS-plus and 13 mm shanks available on request) Optimum results when used with a high-torque, low rpm drill
Scope of delivery	110 mm core cutter, pilot drill, SDS-max shank, transport box
Transport weight	3.8 kg

Tools for Saddles



Product code 4_4702_011

CORE CUTTER FOR SADDLES 4" IPS

For 4" IPS spigot

For saddle size groups

L

Dimension range

4" IPS

Additional information

Also available for 2" female thread, 3" IPS and 4" DIPS spigots

With SDS-max shank (SDS-plus and 13 mm shanks available on request)

Optimum results when used with a high-torque, low rpm drill

Scope of delivery

4" IPS core cutter, pilot drill, SDS-max shank, transport box

Transport weight

3.8 kg



Product code 4_4701_250

SADDLE CLAMP 250 MM

For 250 mm spigot

For saddle size groups

XL

Dimension range

250 mm spigot

Additional information

Other sizes (180-225 mm) on request

Scope of delivery

Additional set of tensioning tools (4_4701_009) is required

Splitable saddle clamp, rounding ring, aluminium box

Transport weight

29.2 kg



Product code 4_4701_009

TENSIONING TOOLS

For large saddle clamps 180-400 mm

For saddle size groups

XL, XXL

Dimension range

For saddle clamps 180-400 mm

Additional information

For tensioning of all Plasson large branch saddle clamps with 180-400 mm spigots

Scope of delivery

Torque ratchet, 3 strap ratchets incl. straps, pressure test pipe removal tool, adapter for pressure test pump, unlocking tool for strap ratchets, aluminium box

Transport weight

21.6 kg

Tools for Saddles



Product code 4_4702_999

DRILL FOR CORE CUTTERS

For core cutters 2"-250 mm

For saddle size groups	L, XL
Dimension range	For core cutters 2"-250 mm
Additional information	Can also be used with core cutters for saddles of group L (90-160 mm) The drill is specially modified to be used together with core cutters by PFS
Scope of delivery	Set includes a long handle and a high-torque attachment and special hexagonal adapter shank for PFS core cutters
Transport weight	8.1 kg



Product code 4_4702_199

CORE CUTTER FOR SADDLES 250 MM

For 250 mm spigot

For saddle size groups	XL
Dimension range	250 mm
Additional information	With SDS-max shank (SDS-plus and 13 mm shanks available on request) Optimum results when used with a high-torque, low rpm drill
Scope of delivery	250 mm core cutter, pilot drill, SDS-max shank, transport box
Transport weight	7.4 kg



Product code 4_4701_400

SADDLE CLAMP 400 MM

For 400 mm spigot

For saddle size groups	XXL
Dimension range	400 mm spigot
Additional information	Other sizes (280-355 mm) on request Additional set of tensioning tools (4_4701_009) is required
Scope of delivery	Splitable saddle clamp, pressing tool, aluminium box
Transport weight	22.6 kg

Tools for Saddles



Product code 4_4701_009

TENSIONING TOOLS

For large saddle clamps 180-400 mm

For saddle size groups

XL, XXL

Dimension range

For saddle clamps 180-400 mm

Additional information

For tensioning of all Plasson large branch saddle clamps with 180-400 mm spigots

Scope of delivery

Torque ratchet, 3 strap ratchets incl. straps, pressure test pipe removal tool, adapter for pressure test pump, unlocking tool for strap ratchets, aluminium box

Transport weight

21.6 kg



Product code 4_4702_900

DRILL SUPPORT

For large core cutters for 180-400 mm spigots

For saddle size groups

XL, XXL

Dimension range

180-400 mm

Additional information

Scope of delivery

Drill stand with drill engine, core cutter adapter and tensioning straps

Transport weight

53 kg



Product code 4_4702_319

CORE CUTTER FOR SADDLES 400 MM

For 400 mm spigot

For saddle size groups

XXL

Dimension range

For 400 mm spigot

Additional information

With SDS-max shank (SDS-plus and 13 mm shanks available on request)

Optimum results when used with a high-torque, low rpm drill

Scope of delivery

400 mm core cutter, pilot drill, SDS-max shank, transport box

Transport weight

12.7 kg

Miscellaneous Tools



Product code 5_5003_001

PI METER 630 MM

Dimension range Up to 630 mm

Additional information Quick and easy measurement of pipe diameter and circumference
Also available for pipe dimensions up to 1200 mm

Scope of delivery PI Meter, packaging

Transport weight 0.15 kg



Product code 5_3100_019

PIPE MARKER

Dimension range All pipes made of PE, PE-HD, PEX, PP

Additional information Liquid ink
Colour: silver

Scope of delivery Pipe marker

Transport weight 0.017 kg



Product code 4_4402_001

MAGNETIC PIPE RULER 110-800 MM

Dimension range 110-800 mm

Additional information Very helpful tool for alignment and circular marking of pipes

Scope of delivery Magnetic pipe ruler, plastic container

Transport weight 2 kg

Miscellaneous Tools



Product code 5_2000_001

TANGIT CLEANER LIQUID

Dimension range	For all pipes made of PE, PE-HD, PEX, PP
Additional information	Contains 1 litre
Scope of delivery	Container w/1L Tangit cleaner
Transport weight	1.1 kg



Product code 5_2000_002

TANGIT CLEANING TOWELS

Dimension range	For all pipes made of PE, PE-HD, PEX, PP
Additional information	Contains 100 cleaning towels
Scope of delivery	Container w/100 Tangit cleaning towels
Transport weight	0.3 kg



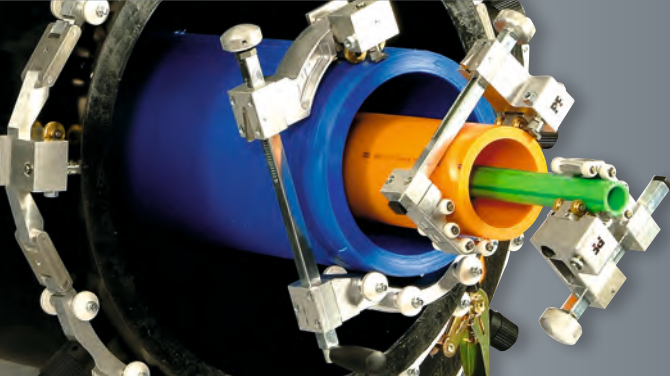
Product code 5_3004_002

CHAMFERING TOOL 20-250 MM

Dimension range	20-250 mm
Additional information	Quick and easy chamfering of pipe ends in the given dimension range.
Scope of delivery	Chamfering tool, packaging
Transport weight	0.7 kg



WELDING TECHNOLOGY FOR PE-PIPES



PF-Schweisstechnologie GmbH
Karl-Bröger-Strasse 10
36304 Alsfeld/Germany
Phone +49 6631 9652-0
E-Mail: info@pfs-gmbh.com

www.pfs-gmbh.com